



SuperRange4 Cardbus

Public Safety 4.9GHz Mobility Client

The SuperRange4 Cardbus adapter is a hi-performance, hi-power FCC Part90Y certified 4.9GHz client solution specifically designed to work with 4.9GHz mesh networks. In addition to high output power, it features excellent receiver performance, external antenna connectors, advanced mobility functionality and configuration, as well as Cisco CCX 4.0 support with the latest QoS and Security standards.



Mesh Networking and Mobility Support

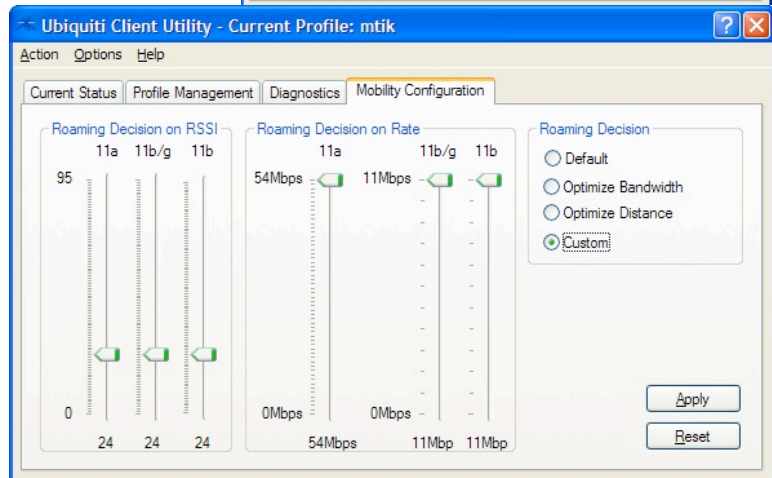
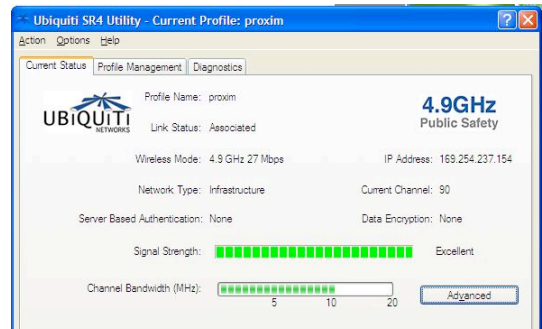
In addition to the superior range and radio performance of SR4C, Ubiquiti has developed an enhanced application that has been qualified and tested with systems from Skypilot Networks, BelAir Networks, Proxim, Packet Hop and others. The utility is able to scan all 4.9GHz channels, associate at 5/10/20MHz channels widths, and provide performance feedback to the end user. An advanced mobility application allows network administrators

to optimize mobility performance based on a variety of thresholds such as signal level, data rate, and AP credentials.



Laptop equipped with Ubiquiti SR4C + external antenna

Mobility Screen



SuperRange4 Cardbus

TECHNICAL SPECIFICATIONS



495-499 Montague Expwy.
 Milpitas, CA 95035
 T (408)-942-3085
 F (408)-351-4973
<http://www.ubnt.com>

CARD INFORMATION	
Radio Operation	Proprietary 4.9GHz based on OFDM 802.11a with QPSK/16QAM/64QAM
Interface	32-bit Cardbus Type II
Operation Voltage	3.3VDC
Antenna Ports	Dual MMCX (Primary only required; secondary optional for diversity)
Temperature Range	-40C to +80C (extended temp version up to +95C)
Security	WPA, WPA2, AES-CCM & TKIP Encryption, 802.1x, 64/128/152bit WEP
Data Rates	6Mbps, 9Mbps, 12Mbps, 24Mbps, 36Mbps, 48Mbps, 54Mbps
RoHS Compliance	YES

REGULATORY INFORMATION	
Wireless Modular Approvals	FCC PART90Y and Industry Canada. Approval covers antenna use up to 27dBi

RADIO OPERATING FREQUENCY 4.94-4.99GHz							
TX SPECIFICATIONS				RX SPECIFICATIONS			
	DataRate	TX Power	Tolerance		DataRate	Sensitivity	Tolerance
4.9GHz OFDM	6Mbps	23 dBm	+/-1.5dB	4.9GHz OFDM	6Mbps	-94 dBm	+/-1.5dB
	9Mbps	23 dBm	+/-1.5dB		9Mbps	-93 dBm	+/-1.5dB
	12Mbps	23 dBm	+/-1.5dB		12Mbps	-91 dBm	+/-1.5dB
	18Mbps	23 dBm	+/-1.5dB		18Mbps	-90 dBm	+/-1.5dB
	24Mbps	23 dBm	+/-1.5dB		24Mbps	-86 dBm	+/-1.5dB
	36Mbps	21 dBm	+/-1.5dB		36Mbps	-83 dBm	+/-1.5dB
	48Mbps	20 dBm	+/-1.5dB		48Mbps	-77 dBm	+/-1.5dB
	54Mbps	19 dBm	+/-1.5dB		54Mbps	-74 dBm	+/-1.5dB

CURRENT CONSUMPTION INFORMATION							
TX CURRENT CONSUMPTION				RX CURRENT CONSUMPTION			
	DataRate	Current	Tolerance		DataRate	Current	Tolerance
4.9GHz OFDM	6Mbps	0.80 A	+/-100 mA	4.9GHz OFDM	6Mbps	300 mA	+/-100 mA
	9Mbps	0.80 A	+/-100 mA		9Mbps	300 mA	+/-100 mA
	12Mbps	0.80 A	+/-100 mA		12Mbps	300 mA	+/-100 mA
	18Mbps	0.80 A	+/-100 mA		18Mbps	300 mA	+/-100 mA
	24Mbps	0.80 A	+/-100 mA		24Mbps	300 mA	+/-100 mA
	36Mbps	0.70 A	+/-100 mA		36Mbps	300 mA	+/-100 mA
	48Mbps	0.65 A	+/-100 mA		48Mbps	300 mA	+/-100 mA
	54Mbps	0.55 A	+/-100 mA		54Mbps	300 mA	+/-100 mA

4.9GHz PUBLIC SAFETY FREQUENCY CHANNEL SUPPORT							
Frequency	5MHz	10MHz	20MHz	Frequency	5MHz	10MHz	20MHz
4942.5 MHz				4967.5 MHz			
4945.0 MHz				4970.0 MHz			
4947.5 MHz				4972.5 MHz			
4950.0 MHz				4975.0 MHz			
4952.5 MHz				4980.0 MHz			
4957.5 MHz				4982.5 MHz			
4960.0 MHz				4985.0 MHz			
4962.5 MHz				4987.5 MHz			
4965.0 MHz							

RANGE PERFORMANCE	
Indoor (Antenna Dependent):	Up to 100meters
Outdoor (Antenna Dependent):	Over 1km

DRIVER INFORMATION	
Operating System Support	Linux MADWIFI, WindowsXP, Windows2000
Advanced Mobility / QuickHandoff	WindowsXP/2000 Utility with Enhanced Mobility Driver from Ubiquiti
Cisco Support	CCX 4.0 Supported Driver/Utility also available from Ubiquiti
For help with MADWIFI or other Special Driver Support, Please e-mail support@ubnt.com	

LAPTOP ANTENNA INFORMATION	
Antenna Dimensions	5.1 in x 0.83 in
Cable	18 in with MMCX plug
Antenna Type / Polarization	Omni-directional / Vertical Polarized
Antenna Gain	4dBi
Mounting Type	Adjustable Laptop Clip Mount and Sticker Mount Included